



GROW TRAYS

GROW TRAYS

Pipp Grow Trays provide connection points for lights, air circulation, and plumbing. They drain effortlessly with HDPE inserts that are fungal-resistant and anti-microbial. Typical tray sizes are 8'x4', 8'x3', 4'x4', and 4'x3', but custom sizes are available.



ABS Grow Trays

ABS Grow Trays are used for Drip-to-Drain irrigation styles. They are made from a durable ABS plastic, a deep-draw thermoformed process is used to create a 1/2" built-in slope for drainage. The ABS material has a co-extruded acrylic cap for UV stability and anti-microbial/fungal-resistant properties. Tray capacity not to exceed 15 lbs./f².

*U.S. Patent No. D906,876 SI U.S. Patent No. 11,116,148
Additional U.S. Patent Pending

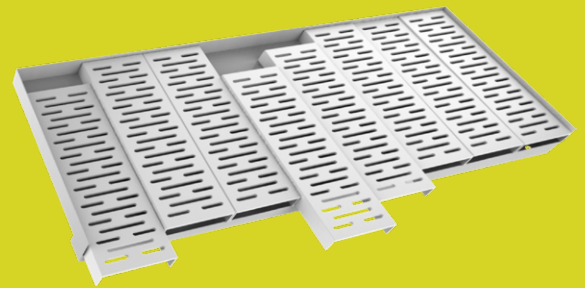
Drip-to-Drain Grow Trays

With Optional HDPE Inserts

Drip-to-Drain Trays are perfect for Drip-to-Drain irrigation. They feature optional HDPE Inserts that are fungal-resistant and anti-microbial. Tray capacity not to exceed 20 lbs./f².

*U.S. Design Patent No. D925,392.

*Made to order, longer lead times apply. Check with sales team for details.



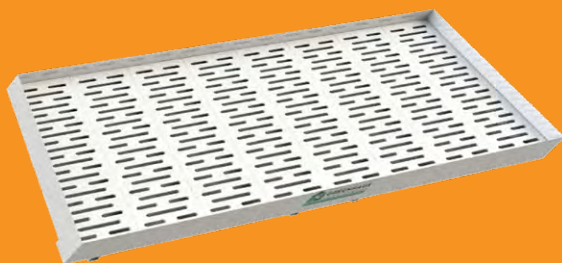
Combination Grow Trays

With Optional HDPE Inserts

These trays can be used for Drip-to-Drain irrigation or Ebb-and-Flow. They are combined with our Vertical Grow Racking and Mobile Carriages to provide the most efficient indoor grow space. Tray capacity not to exceed 20 lbs./f².

*U.S. Design Patent No. D906,876.

*Made to order, longer lead times apply. Check with sales team for details.



Airflow Grow Trays

Airflow Grow Trays are designed for Drip-to-Drain irrigation with Rockwool slabs. Traditional pots are also a great option. The sectional trays allow for unobstructed airflow, using a combination of natural convection and improved performance of in-rack airflow solutions. Tray capacity not to exceed 50 lbs.

