

The logo for PIPP Horticulture features a stylized white leaf icon to the left of the word "PIPP" in a bold, white, sans-serif font. Below "PIPP" is the word "HORTICULTURE" in a smaller, white, all-caps, sans-serif font.

**PIPP**<sup>®</sup>  
HORTICULTURE

*Elevate. Cultivate. Grow.*<sup>®</sup>



SCAN FOR A  
**FREE  
QUOTE**



## VERTICAL FARMING SOLUTIONS

The future of indoor farming is **maximizing space and efficiency** with mobile vertical cultivation racks.

Pipp takes you there by **TAKING YOU UP!**

As LED technology continues to improve and outperform traditional HPS lighting, single-tier facilities are giving way to multi-tiered rolling vertical farms.

### **Vertical Farming = Greater Output**

Vertical farming reduces operating costs and increases your overall revenue per square foot.

The question isn't **IF** you should make the change, it's **WHO** can best help you get the job done?





## ***Pipp Horticulture is the leading provider of **movable vertical racking systems!*****

Pipp systems are installed in hundreds of indoor cultivation facilities across North America and Europe! With **over 40 years of experience** serving the nation's top retailers, Pipp has engineered cost-saving solutions that can exponentially increase your production without adding an inch to your footprint. Double or triple your canopy by maximizing your cubic grow space with more efficient workflow.

Not only can you produce more, **you'll save more.**

Pipp's prices are lower than the industry standard thanks to decades of experience in the price-sensitive retail market, factory direct sales channel, and an efficient team of licensed installers.

Pipp's mobile multi-level rack and tray systems are the most cost-effective investment you can make.

- ▶ NSF Certified
- ▶ Efficient
- ▶ Easy to Clean
- ▶ Lightweight
- ▶ ADA & Seismic Compliant Options
- ▶ Sustainable
- ▶ Safe & Durable
- ▶ Includes Full Design & Installation Services



# Advantages



## **MADE IN THE USA** **FACTORY DIRECT**

Based in Grand Rapids, Michigan, Pipp serves cultivators with the same expertise that forged its dominance in the retail industry. You deal directly with us and we design specifically for you. No wasted resources...no mark-ups...**YOU WIN!**



## **MARINE GRADE ALUMINUM**

We build our carriages and tracks with non-corrosive high tensile aluminum extrusions and stainless steel rails to provide premium strength in a lightweight durable system.



## SEISMICALLY APPROVED

California might bear the biggest risk for earthquakes, but natural disasters can strike anywhere. We mitigate that risk with ADA and seismic code compliant options.



## MOBILE FLEXIBILITY

We do offer fixed racks, however nearly all of our customers enjoy the benefits of going mobile. Choose from our manual or mechanical-assisted systems to easily access all parts of your garden and enjoy a more efficient workflow.



## SINGLE LEVEL START

Many cultivators like the idea of starting out single level and evolving into multiple tiers. With the primary infrastructure in place, adding additional supports and trays are relatively easy with minimal down time.

# Case Study: PLANTED DETROIT

## THE GOAL

The facility wanted to...

### *Grow*

vertically to maximize canopy space  
within a set footprint

### *Create*

a controlled environment agriculture  
facility

### *Increase*

the number of different plants that can  
be grown at once





## Planning

Pipp's team of engineers and installation experts worked with Planted Detroit to install mobile vertical grow racking systems that were clean and biosecure. This was extremely vital to Planted's mission to provide healthy nutrient-rich food for the Detroit community.



## Solution

Planted Detroit worked with Pipp Horticulture to implement Pipp their mobile vertical grow racking system, which allowed them to **grow 8x more**. By utilizing 3,000 grow trays, Planted Detroit can also now easily access and tend to all of their plants.



## Results

- ▶ **GROWING 8X MORE** with 14 8-tier mobile vertical grow racks
- ▶ **MORE SUSTAINABLE** with a controlled environment agriculture platform
- ▶ **INCREASED EFFICIENCY** with the ability to grow 8 levels of different plants at a time



*“Vertical farming has so many advantages. Mainly, being able to **produce 6x more in the same square footage** is what makes this modern method of farming so great... This allows us to grow in areas we never thought possible, like urban centers with poor soil quality.”*

- High Ridge Hydroponics







**farmone**  
THE NEIGHBORHOOD FARM

*“Pipp’s mobile racks allow Farm.One to achieve more than **30% greater production** capacity per square foot in our grow rooms, which make using the racks a no-brainer for our business. Pipp’s expert sales and engineering team worked closely with us to ensure success throughout the design, purchasing, and installation process. One of our favorite features is the ELEVATE® Platform System, which allows our workers to safely and easily access upper levels of the racks. We are very happy to have chosen Pipp as our partner in racking.”*

- Farm.One

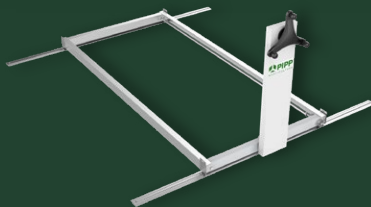


*“We chose Pipp racking because its mobile aisles allow us to **grow more of our produce in the same footprint** and helps us deliver the best product possible to our customers.”*

*- Kai Misner | Leader of Hydroponic Technology*



# BUILD THE **ULTIMATE GROW SYSTEM**



**Mobile Carriages**



**Vertical Racks**



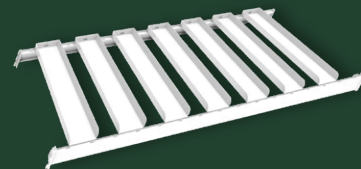
**Mobile Carts**



**In-Rack Airflow System**

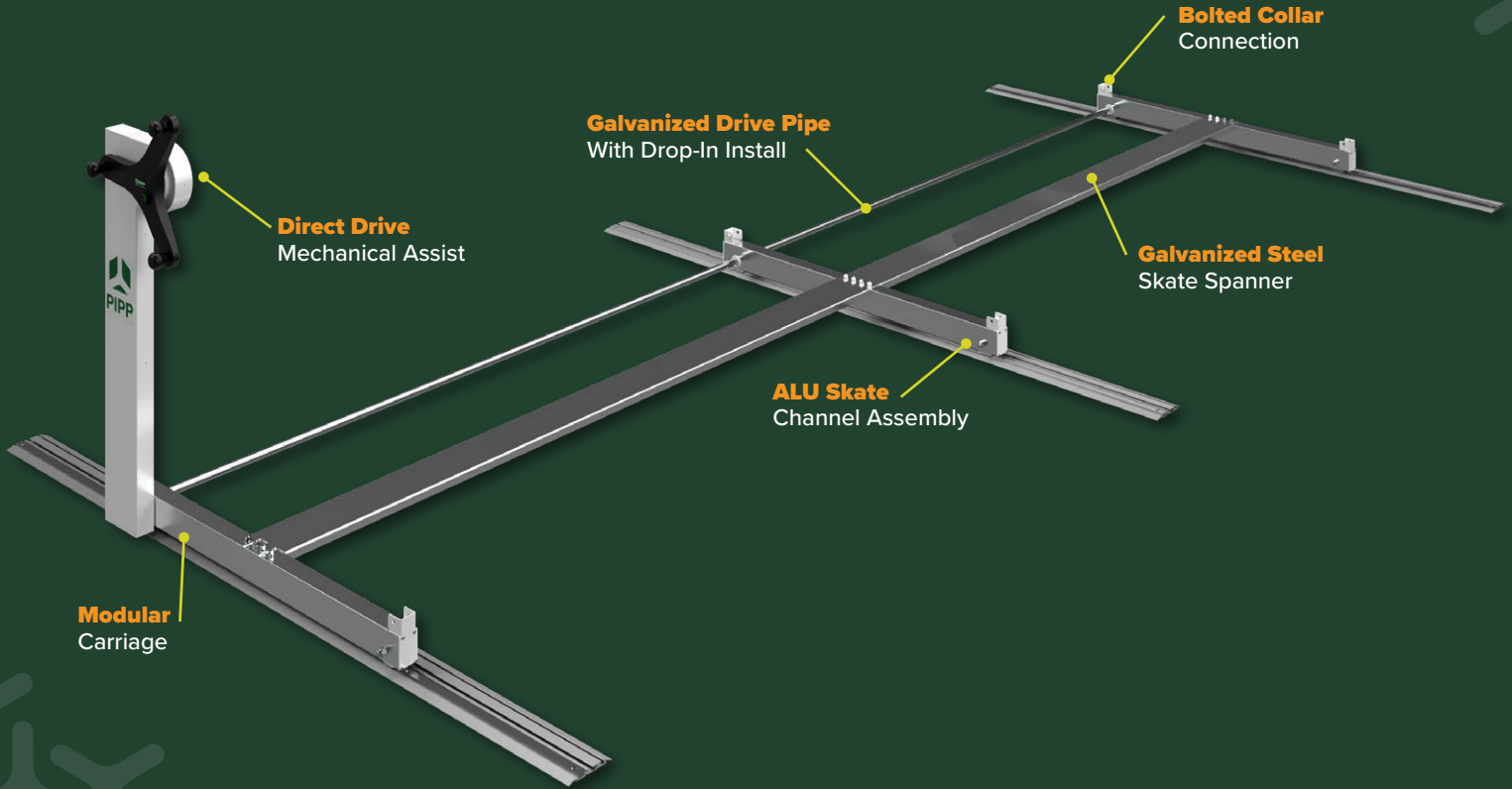


**ELEVATE® Platform**

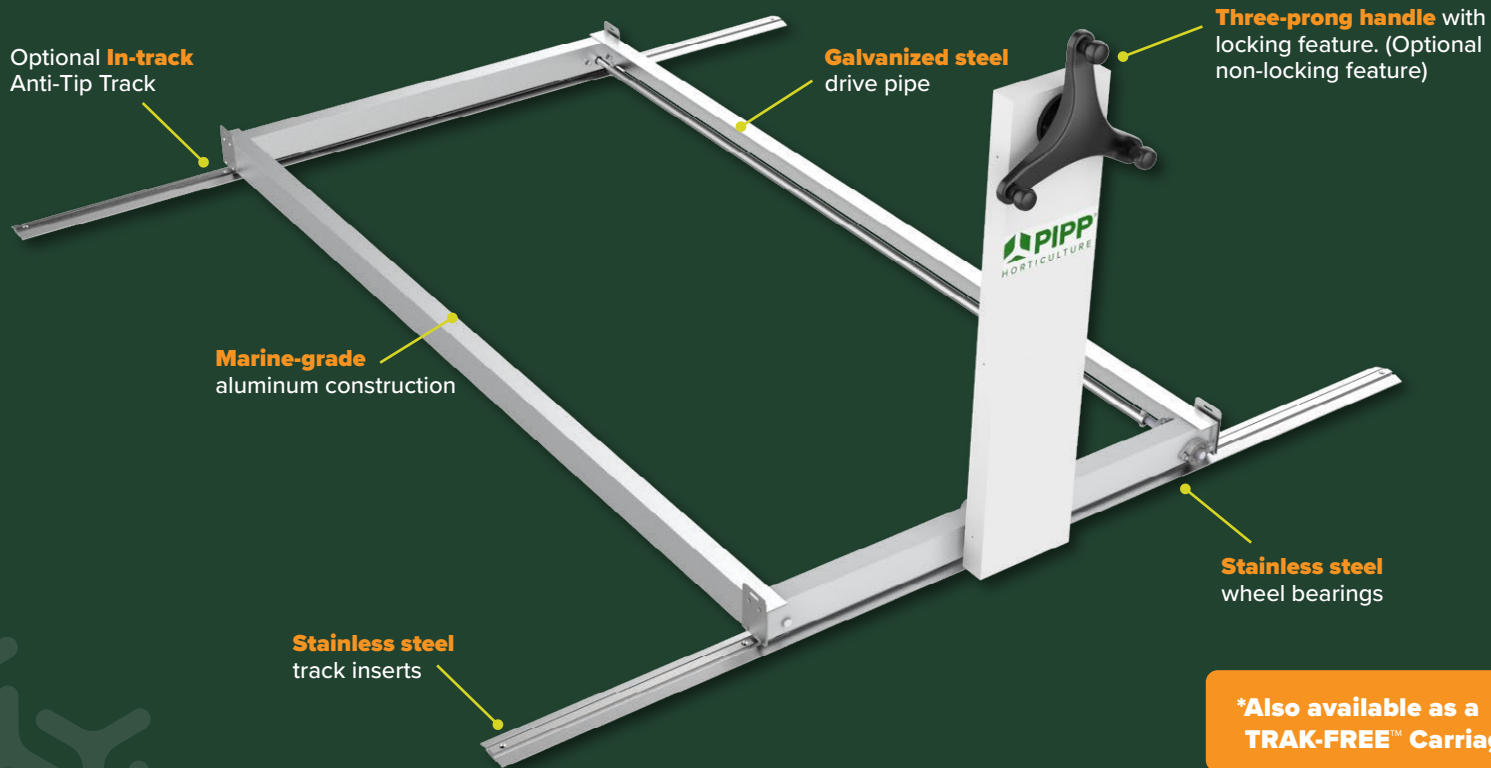


**Grow Trays**

# MODULAR CARRIAGE



# MECHANICAL-ASSIST CARRIAGE



\*Also available as a **TRAK-FREE™** Carriage

# VERTICAL **GROW RACK**

**Racks** available up to 16' high.  
(Racks higher than 16' require engineering approval).

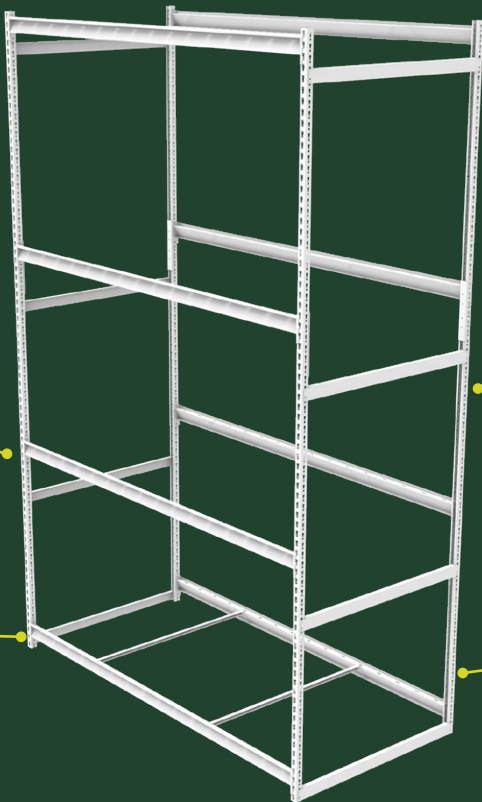
**High capacity shelving** constructed from high strength steel.

Features a dual coat finish with an **E-Coat base layer** for corrosion protection and a top layer of **white powder coating** with anti-microbial and anti-fungal properties.

**Modular Uprights** allow for a knock-down design and support up to 17,000 lbs.

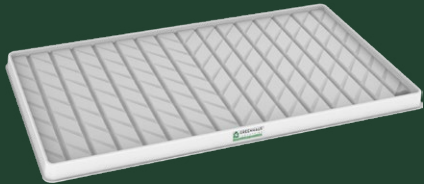
**Beams** can support up to 2,150 lbs.

**Supports** accommodate a wide variety of grow trays, accessories, mounting equipment for LED lights and other utilities.



# GROW TRAYS

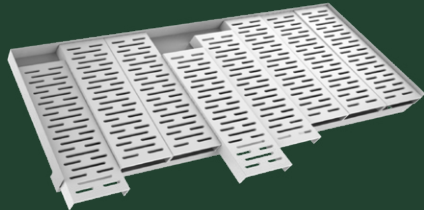
Pipp Grow Trays provide connection points for lights, air circulation, and plumbing. They drain effortlessly with HDPE inserts that are fungal-resistant and anti-microbial. Typical tray sizes are 8'x4', 8'x3', 4'x4', and 4'x3' (custom sizes available).



## ABS Grow Trays

ABS Grow Trays are used for Drip-to-Drain irrigation styles. Made from a durable ABS plastic, a deep-draw thermoformed process is used to create a 1/2" built-in slope for drainage. The ABS material has a co-extruded acrylic cap for UV stability and anti-microbial/fungal-resistant properties. Tray capacity not to exceed 15 lbs./f<sup>2</sup>.

\*U.S. Patent No. D906,876 S | U.S. Patent No. 11,116,148 | Additional U.S. Patent Pending

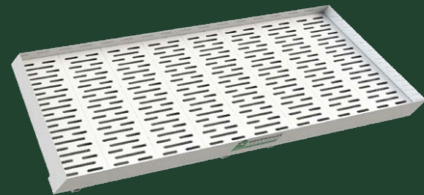


## Drip-to-Drain Grow Trays with optional HDPE Inserts

Drip-to-Drain Trays are perfect for Drip-to-Drain irrigation. They feature optional HDPE Inserts that are fungal-resistant and anti-microbial. Tray capacity not to exceed 20 lbs./f<sup>2</sup>.

\*U.S. Design Patent No. D925,392.

\*Made to order, longer lead times will apply. Check with sales team for details.



## Combination Grow Trays with optional HDPE Inserts

These trays can be used for Drip-to-Drain irrigation or Ebb-and-Flow. They are combined with our Vertical Grow Racking and Mobile Carriages to provide the most efficient indoor grow space. Tray capacity not to exceed 20 lbs./f<sup>2</sup>.

\*U.S. Design Patent No. D906,876.

\*Made to order, longer lead times will apply. Check with sales team for details.

# STATIONARY & ROLLING BENCHES

GGs benches can be **stationary or rolling** and are fabricated in expanded metal covering, Ebb-and-Flood trays, or irrigation troughs. The bench assembly is designed for easy installation with snap together aluminum profiles and factory welded stands to make your job easier!

- ▶ All aluminum, snap together top frames.
- ▶ All aluminum, adjustable stands for easy leveling.
- ▶ Strong yet lightweight for easier assembly.
- ▶ Corrosion resistant.
- ▶ Customizable height.
- ▶ Pre-galvanized steel purlin bracing and roll tubes.
- ▶ Rolling benches have 2" roller tubes for easy roll even with freshly watered plants.

**GGs**<sup>™</sup>  
STRUCTURES

DIVISION OF PIPP HORTICULTURE





# MOBILE CARTS

Our high quality manufactured products don't stop at our vertical growing racks. Pipp's drying carts are durable, space-saving and best of all, configurable. Mobile storage carts and drying carts allow you to further maximize the space in your facility.



## Drying Cart

The Drying Cart is designed to accommodate hanging plants in order to dry and cure them for further processing. It has adjustable cantilever-style finger attachments which allow you to configure the cart as needed.



## Shelf Cart

The versatile Shelf Cart can be used for both general storage and transporting goods. The shelf levels are adjustable and additional shelves can easily be added to the cart to customize it to suit your needs.



## Combo Cart

The multi-purpose Combo Cart combines our exclusive hanging attachment for drying out plants with adjustable shelves below for general storage and transport needs.



## Wire Cart

These durable and highly functional carts are ideal for mobile storage requirements. The open wire construction minimizes dust and dirt accumulation and maximizes airflow as well visibility.

# NESTING DRYING RACKS

The Nesting Drying Rack delivers ease of use, safety, and long life. Heavy-duty construction combined with standard 5" swivel non-marring casters provide a 1,000 lb. total load capacity. Z-Base allows for nesting when not in use.



**Nesting  
Drying Rack**



**4 Drying Racks  
Nested Together**



**Optional Fold-Up  
Bottom Shelf**



**Optional Middle  
Hangrail**

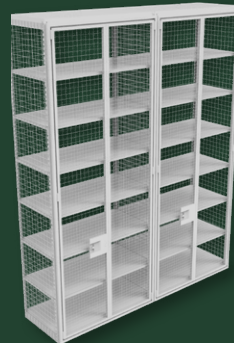
# SECURED STORAGE



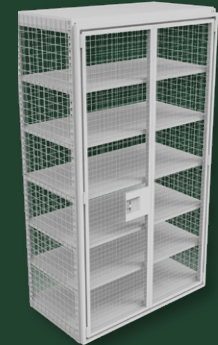
**Pipp's Solid Lockers** are built to be durable with their heavy duty steel construction and high grade powder-coat finish. These versatile lockers are available in a variety of configuration options and colors. Several accessories are also available.

**Secured Storage Systems** feature robust pry-resistant doors, fully welded closed tube frame, and a three-point rod locking mechanism. Store any size product with adjustable shelf spacing on 2-1/2" increments.

**10'H Double Secured Storage Unit**



**6'H Single Secured Storage Unit**




# ELEVATE® PLATFORM SYSTEM

The **ELEVATE® Platform System** is a robust, lightweight, and portable deck to allow cultivators to access Pipp's Multi-Tier Mobile Grow Racks quickly, efficiently, and most importantly - safely. This patented system was designed to integrate with Pipp's Bulk Rack Shelving Systems without any modifications. The ELEVATE® Platform System can be installed on new or existing mobile vertical grow racks.

- ▶ U.S. Patent No. 11,478,079
- ▶ Lightweight components allows one person to set up the entire system.
- ▶ Aluminum and galvanized steel components are corrosion resistant.
- ▶ Deck sections are 22" x 49" giving ergonomic access to canopy without giving up overall canopy throughout room.
- ▶ Galvanized steel support rails hold 650 lbs per pair (tested to 4x capacity per OSHA requirements).
- ▶ Purpose built support rails are adjustable and have integrated anti-dislodge protection features to keep beams secure while in use.
- ▶ Multiple people can access and work on the platform at once.
- ▶ Ladders available to cover deck heights between 30" and 120" A.F.F.
- ▶ Mobile Vertical Racking designs that incorporate a 46" or larger mobile access aisle, two separate working rows of the ELEVATE® Platform System may be utilized simultaneously.





# AIR CIRCULATION SYSTEMS

**Vertical Air Solutions'** patented in-rack airflow system provides canopies with uniform, top-down airflow while homogenizing the climate in a multi-layered rolling rack platform. The first purpose-built system of its kind, developed by growers for growers. This cutting-edge product is designed to enhance your cultivation environment with precision and efficiency at a fair price.

- ▶ **Vertical Airflow:** Harness the power of strategic vertical airflow to ensure uniform temperature, humidity, and CO<sub>2</sub> throughout your grow space.
- ▶ **Increased Savings:** Enjoy cost savings and sustainability with this energy-efficient system that maximizes air circulation while minimizing power consumption.
- ▶ **Enhanced Crop Health:** Promote vigorous plant growth while mitigating the risk of mold and disease by maintaining consistent environmental conditions.
- ▶ **Customizable Control:** Tailor the airflow to meet your plants' unique needs with adjustable fan speeds and a modular system design.
- ▶ **Space Saving Design:** This compact and sleek system is engineered to fit seamlessly into most vertical racking systems with the thinnest form factor on the market while providing superior performance.
- ▶ **U.S. Patents**
  - US Patent No. 10,694,682 B2
  - US Patent No. 10,806,099 B2
  - U.S. Patent No. 11,632,915
  - U.S. Patent No. 11,641,810

\*Other US and foreign patents pending



## The vertical farming industry is growing every day!

Grand View Research estimates that the global vertical farming product market will **grow by 25.7%** by 2027. For indoor cultivation, mobile vertical racks are a vital tool for a successful growth system and can increase both yields and annual revenue.

Here are **6 things to consider** when picking a Vertical Rack Provider.

1

### *Dedication*

Are they dedicated to the horticulture market?

2

### *Innovation*

Do they provide innovative tools that enhance your yields?

3

### *Lead Times*

What are the lead times? Are products sourced in the USA?

4

### *Integration*

Do they offer integrated tray systems?

5

### *Drive System*

Is a continuous drive shaft a standard feature?

6

### *Service*

Do they put the customer first from sales to service?

With **over 40 years of experience** in the mobile racking industry, Pipp Horticulture is not just a provider, but a partner. Our certified installation team and the most experienced cultivation experts in the industry provide companies with custom solutions that maximize their grow space!

# FAQs

## How tall can the racks be?

Mechanical-Assist Cultivation Systems can be built up to 16' high and 56' long. Systems larger than this would require engineering approval.

## What kind of track and rails are used? How are they installed?

Our unique track and rail system is marine grade aluminum and stainless steel. It is only ½" high and includes an anti-tip feature to comply with seismic codes. We level and anchor the rails into concrete floors for a high quality, safe installation that performs for decades.

## How about irrigation and drainage?

Irrigation and drainage equipment is typically provided by the end user. Our systems can be designed to accommodate a wide range of applications.

## Can vertical grow racks tolerate the conditions of a grow room?

Yes. However, prolong exposure to excessive humidity levels (+55% RH) and direct contact with water can eventually cause corrosion and/or oxidation over time. These are merely cosmetic and do not compromise the strength and durability of the grow system. Routine cleaning and maintenance of the system is the best way to mitigate this risk and maximize the system's performance and longevity.



**CONTACT OUR TEAM**  
*to elevate your cultivation!*



(616) 988-4044



[pipphorticulture.com](http://pipphorticulture.com)



[info@pipphorticulture.com](mailto:info@pipphorticulture.com)



[@pipphorticulture](https://www.instagram.com/pipphorticulture)