

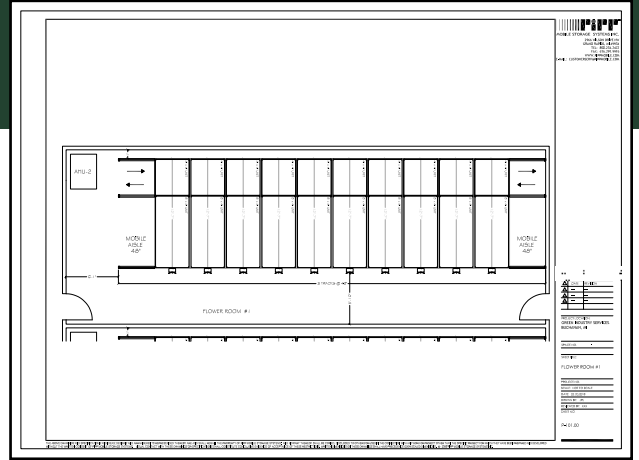
REDBUD ROOTS CASE STUDY

ABOUT REDBUD ROOTS

Redbud Roots is first to market in this new industry. This allowed us to set the bar and the industry standard to what kind of true medicine the industry is seeking. With our approach to the patient first, we can mold our medicine to meet the exact needs of every ailment we address. We also have a notable research and development lab where we are partnering with several doctors, universities and industry leaders to develop new strains to attack illnesses like Parkinson's, Alzheimer's and Autism. Our state of the art lab will allow us to make consistent, precise medicine.

PLANNING

Our team of in-house designers, engineers, and experienced cultivation experts designed a mobile cultivation system that integrated with the other components necessary for successful operation, like lighting, airflow, irrigation and drainage systems.



THE PROBLEM



GROW vertically maximize canopy space in 3 buildings



MOVEMENT of aisles for a better workflow



HIGHER YIELD and return on investment

Elevate. Cultivate. Grow.



66%
CANOPY
GAIN

480
PLANTS
Per Room

1
PLANT
Per SQFT

384
SQFT
INCREASE

THE SOLUTION

Pipp Horticulture provided 2-tier movable grow racks in each of their veg and clone rooms, more than **DOUBLING THEIR CANOPY SPACE**. We also found space to provide movable drying racks with 3 levels of dry products per movable rack.



THE BENEFITS

INCREASED \$1,552,320
in flower revenue

HIGHER YIELD with less
overhead costs

MORE SUSTAINABLE and
environmentally conscious platform



“Pipp has been an absolute blessing, they’re the most reliable, and have more than doubled our grow space.”

HUNTER MISHLER, *Director of Production Science, Buchanan, MI*



(616) 988-4044 | pipphorticulture.com
info@pipphorticulture.com

@PippHorticulture  